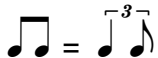


Sweet Caroline

Words and Music by
Neil Diamond
Arranged and Orchestrated by
Joey O'Neill

Moderate shuffle ♩ = 126



A

mp



Where it be - gan, —

10



I can't be - gin to know - ing, but then I know

13



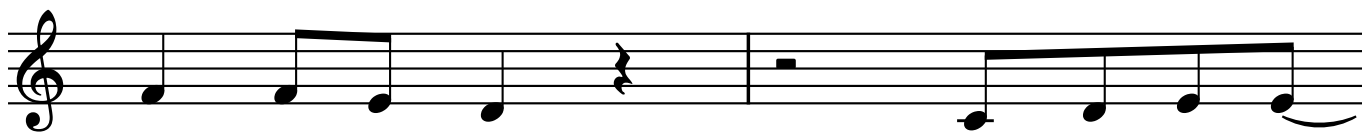
— it's grow - ing strong.

16



Was in the spring, And spring be -

19



- came the sum - mer. Who'd have be - lieved

B

21

— you'd come a - long — Hands,

26 *cresc. poco a poco*

> touch - ing hands, — reach - ing out, —

30

> touch - ing me, — touch - ing you.

C

34 *f*

Sweet Ca - ro - line, — good times ne - ver seemed so

38

good. I've been in - clined to be - lieve

43 *mp*

— they ne - ver would. But now I

46 **D**

Look at the night, and it don't

49

seem so lone - ly. We fill it up with on - ly two.

52

And when I hurt,

56

hurt - ing runs off my shoul - ders. How can I hurt

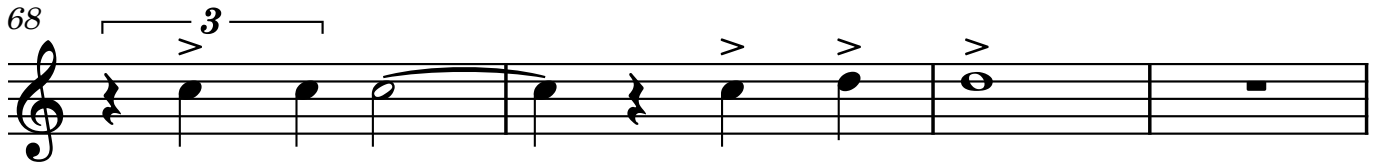
59 **E**

when hold - ing you? One,

64 *cresc. poco a poco*


touch - ing one, reach - ing out,

Sweet Caroline - Primary Voices


68 
 touch - ing me, _____ touch - ing you.

F

72 *f* 
 Sweet Ca - ro - line, _____ good times ne - ver seemed so

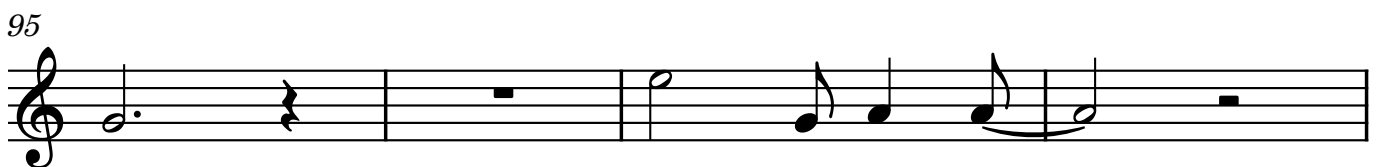
76 
 good. I've been in - clined to be - lieve

G


81 *mp* 
 _____ they ne - ver would, oh, no, no.

H

91 *ff* 
 Sweet Ca - ro - line, _____ good times ne - ver seemed so

95 
 good. I've been in - clined

99



to be - lieve___ they ne - ver would.

Detailed description: This block contains the musical notation for measures 99, 100, and 101. The melody starts with a quarter rest in measure 99, followed by a quarter note G4 in measure 100, and a half note G4 in measure 101. The lyrics are: "to be - lieve___ they ne - ver would."

102

più ff



Sweet Ca - ro - line,___ good times

Detailed description: This block contains the musical notation for measures 102, 103, 104, and 105. The melody starts with a quarter rest in measure 102, followed by a half note G4 in measure 103, a quarter note A4 in measure 104, and a quarter note B4 in measure 105. The lyrics are: "Sweet Ca - ro - line,___ good times". The dynamic marking *più ff* is placed above the first measure.

106



ne - ver seemed so good.

Detailed description: This block contains the musical notation for measures 106, 107, and 108. The melody starts with a quarter note G4 in measure 106, a quarter note A4 in measure 107, and a half note B4 in measure 108. The lyrics are: "ne - ver seemed so good."

109

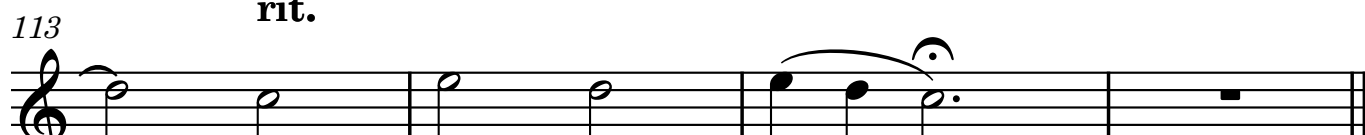


I've been in - clined to be - lieve they ne - ver would.

Detailed description: This block contains the musical notation for measures 109, 110, 111, and 112. The melody starts with a quarter note G4 in measure 109, a quarter note A4 in measure 110, a quarter note B4 in measure 111, and a quarter note G4 in measure 112. The lyrics are: "I've been in - clined to be - lieve they ne - ver would."

113

rit.



___ Sweet Ca - ro - line.____

Detailed description: This block contains the musical notation for measures 113, 114, 115, and 116. The melody starts with a quarter rest in measure 113, followed by a half note G4 in measure 114, a quarter note A4 in measure 115, and a quarter note B4 in measure 116. The lyrics are: "___ Sweet Ca - ro - line.____". The dynamic marking **rit.** is placed above the first measure.